

Instruction Manual

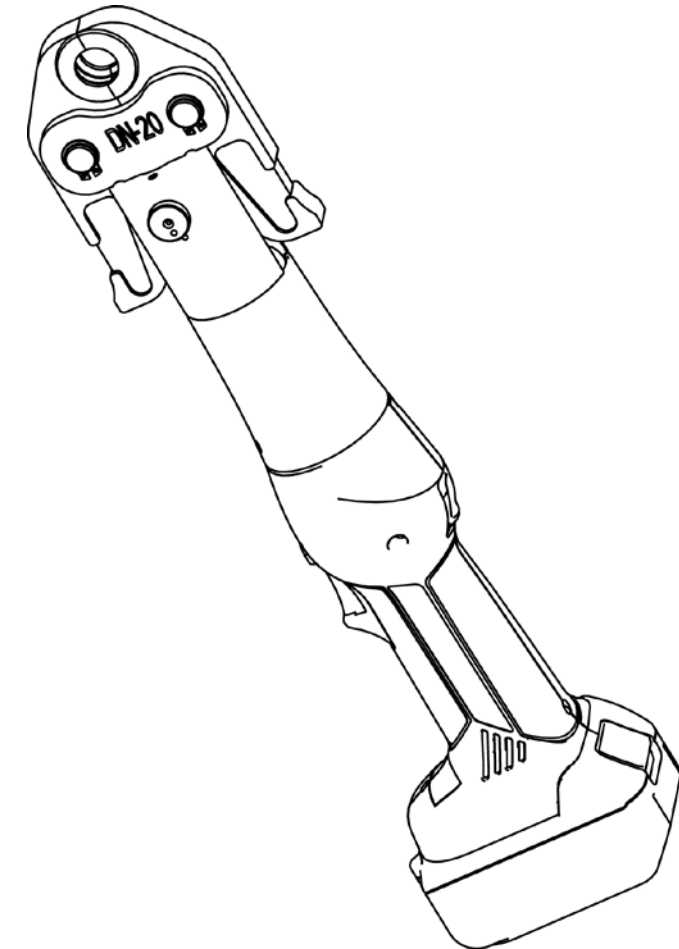
Battery Powered Pressing T-POWER101



For more information:

Contact: 0414-271-385

Website: www.ginde.com.au



Due to continuing improvements, actual product may differ slightly from the product described herein.



Read this material before using this product.

Failure to do so can result in serious injury.

SAVE THIS MANUAL



LIMITED 1 YEAR WARRANTY

We make every effort to assure that its products meet high quality and durability standards, and warrants to the original purchaser that this product is free from defects in materials and workmanship for the period of one year from the date of purchase(90 days if used by a professional contractor or if used as rental equipment). This warranty does not apply to damage due directly or indirectly, to misuse, abuse, negligence or accidents, repairs or alterations outside our facilities, normal wear and tear, or to lack of maintenance. We shall in no event be liable for death, injuries to persons or property, or for incidental, contingent, special or consequential damages arising from the use of our product. Some states do not allow the exclusion or limitation of incidental or consequential damages, so the above limitation of exclusion may not apply to you. THIS WARRANTY IS EXPRESSLY IN LIEU OF ALL OTHER WARRANTIES, EXPRESS OR IMPLIED, INCLUDING THE WARRANTIES OF MERCHANTABILITY AND FITNESS.

To take advantage of this warranty, the product or part must be returned to us with transportation charges prepaid. Proof of purchase date and an explanation of the complaint must accompany the merchandise. If our inspection verifies the defect, we will either repair or replace the product at our election or we may elect to refund the purchase price if we cannot readily and quickly provide you with a replacement. We will return repaired products at our expense, but if we determine there is no defect, or that the defect resulted from causes not within the scope of our warranty, then you must bear the cost of returning the product.

The warranty gives you specific legal rights and you may also have other rights which vary from place to place.

TROUBLESHOOTING


FAULT	ANALYSIS	SOLUTION
Tool is inoperative	<ol style="list-style-type: none"> Dirt, contaminants, etc in ram area of tool. Tool battery contacts damaged Tool components worn or damaged. 	<ol style="list-style-type: none"> Clean tool Reform contacts Return tool to manufacture or distributor
Motor is inoperative	<ol style="list-style-type: none"> Low or uncharged battery Broken switch components 	<ol style="list-style-type: none"> Check charged battery. Inoperative battery may be discharged or may have reached life expectancy Return tool to manufacture or distributor
Motor runs but tool will not complete a cycle	<ol style="list-style-type: none"> Oil level low Air in hydraulic system Cold oil 	<ol style="list-style-type: none"> Return tool to manufacture or distributor Pull trigger and hold retract button simultaneously. Run for approximately 10-15 seconds and then attempt to cut. If unsuccessful, return tool to manufacture or distributor Pull trigger and hold retract button simultaneously to warm oil. Store tool in warm area.
Jaws stop during operation	<ol style="list-style-type: none"> Oil level low Air in hydraulic system 	<ol style="list-style-type: none"> Return tool to manufacture or distributor Pull trigger and hold retract button simultaneously. Hold for 10-15approximately 10-15 seconds
LED glows for 20 seconds	<ol style="list-style-type: none"> Battery charge low 	<ol style="list-style-type: none"> Charge or replace battery
Tool loses oil	<ol style="list-style-type: none"> Damaged internal seal 	<ol style="list-style-type: none"> Return tool to manufacture or distributor

SAVE THIS MANUAL

Keep this manual for the safety warnings and precautions, assembly, operating, inspection, maintenance and cleaning procedures. Write the month and year of purchase. Keep this manual and the receipt in a safe and dry place for future reference.


IMPORTANT SAFETY INFORMATION

In this manual, on the labeling, and all other information provided with this product:


 This is the safety alert symbol. It is used to alert you to potential personal injury hazards. Obey all safety messages that follow this symbol to avoid possible injury or death.


DANGER indicates a hazardous situation which, if not avoided, will result in death or serious injury.


WARNING indicates a hazardous situation which, if not avoided, could result in death or serious injury.


CAUTION, used with the safety alert symbol, indicates a hazardous situation which, if not avoided, could result in minor or moderate injury.

GENERAL SAFETY RULES

TO WORK IN SAFE CONDITIONS WITH THIS TOOLING, IT IS IMPERATIVE TO READ CAREFULLY THE DIRECTIONS FOR USE AND TO FOLLOW THE INSTRUCTIONS IT CONTAINS. IF YOU DO NOT RESPECT THE INFORMATION WRITTEN IN THAT INSTRUCTION MANUAL THE WARRANTY WILL BE CANCELLED.

1. Work area safety

- a. Keep work area clean and clear. Cluttered or dark areas invite accidents.
- b. This tool is not insulated; please do not use it on live conductor.
- c. Please do not use or store the tool under high temperature, or one surrounding filling with corrosive fluid. Pay attention to the sealing kits becoming aging.
- d. Keep children and bystander away while operating the Battery powered crimping tool. Distractions will cause you to lose control.

2. Electrical safety

- e. Make sure the plug matches with the plug seat. Never try any changes on the plug.
- f. Do not put tool, battery and charger under a rainy or humid surroundings, it is easy to trigger an electric shock accident if any water goes into the electric system of the tool.
- g. Do not use electric wire to carry, pull, or to draw out the plug and do not connect the “-” and “+”, the damaged or twined wire may cause an electric shock accident.
- h. If the charger was strongly crashed, or dropping down or any other damages happening, please do not try to repair it by yourself, send it back to the authorized service center as soon as possible. The damaged charger may cause an electric shock accident.
- i. The best temperature for charging is between 10°C-40°C. Make sure the air hole of the battery and charger are uncovered during charging.
- j. Please cut off the power of the charger each time to reduce the hazard from child or the person who not expert on the tool.
- k. Do not wait until the battery runs over for recharging, the recharging will caused the battery does not working anymore. Please keep the battery out of the tool to avoid the power discharge.
- l. Please do not burn the battery or make it being short-circuited, it may cause explosion.
- m. Do not use the waste battery otherwise it will caused the electric shock.
- n. Do not disassemble the battery and charger. If any problem please contact with manufacture or agent.

3. Personal safety

- o. Stay alert, watch what you are doing and use common sense when operating the tool. Do not use the tool while you are tired or still under the influence of drugs, alcohol or medication. A moment of inattention may result in series personal injury.
- p. Use safety equipment. Always use safety equipment such as mask, helmet, safety cap, insulating shoes and etc to reduce the risk of personal injury.
- q. Dress properly. Do not wear loose clothing or jewelry. Keep your hair, clothing and gloves away from moving parts. Loose clothes jewelry or long hair can be caught in moving parts.
- r. Maintain power tools. Check for misalignment or binding of moving parts, breakage of parts and any other condition that may affect the tool operation. If damaged, have the tool repaired before use. Many accidents are caused by poorly maintained power tools.
- s. Please use the tool properly, the tool with correct power will do the job better and safer at the rate for which it was designed.
- t. Do not put your fingers into the head of the tool during operating. Your fingers could be pinched very severely.

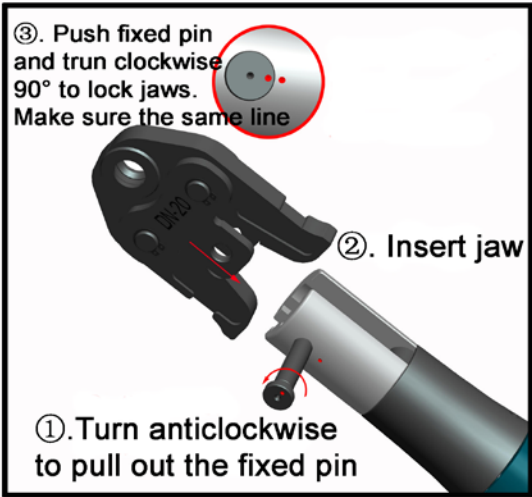
MAINTENANCE AND SERVICING

WARNING

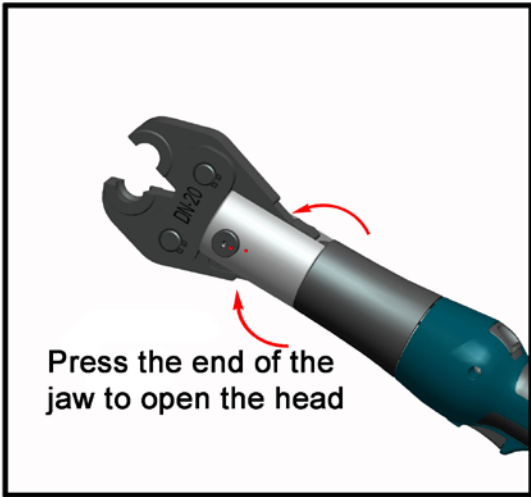
Damaged equipment may cause serious personal injury. Do not use damaged equipment. If abnormal noise or vibration occurs, have the problem corrected before further using.

1. **Before each using**, inspect the general condition of the tool. Check for loose screws, misalignment or binding of moving parts, cracked or broken parts, or any other condition that may affect its safe operation.
2. **After using**, clean external surfaces of the tool with clean, moist, smear the rust preventing oil on the metal surface of the tool and the dies to avoid rusty. Take out the battery from the tool each time to avoid operating the tool unconsciously. Store the tool in the dry environment.
3. Service to the tool should only be done by a qualified Service Technician.
4. In order to prolong the life of the tool please change the oil per year. Make sure the oil filtered by 120 mesh net or over 30µm strainer. Meantime avoid the dusty into the oil cup.
5. After a long time using, the sealing kits will be damaged, if there is leakage please contact with the manufacturer and/or the distributor to change the sealing kits.
6. If the tool not used for a long time, please make sure the piston stay on its starting position, clear up the tool and paint the rustproof oil both to the tool and accessories. Take out the battery and put them into box and store the tool in a dry surrounding.
7. any other condition that may affect the tool operation. If damaged, have the tool repaired before use. Many accidents are caused by poorly maintained power tools.
8. Please use the tool properly, the tool with correct power will do the job better and safer at the rate for which it was designed.

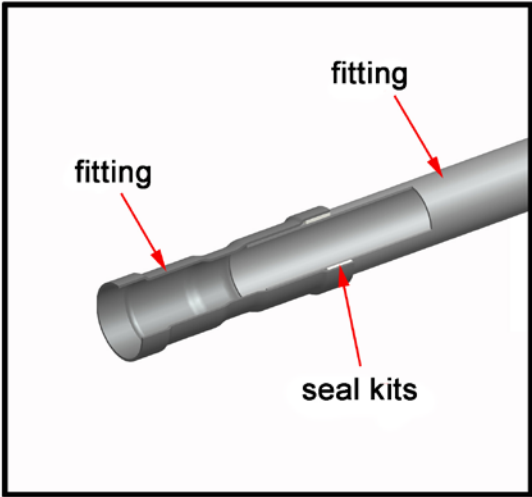
Please refer the illustration For hexagon and Plum Type below.



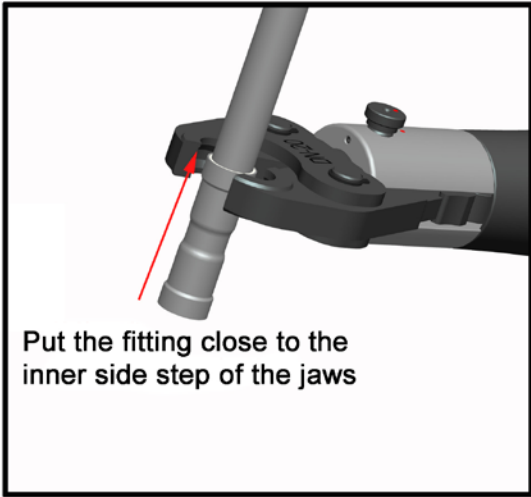
1.



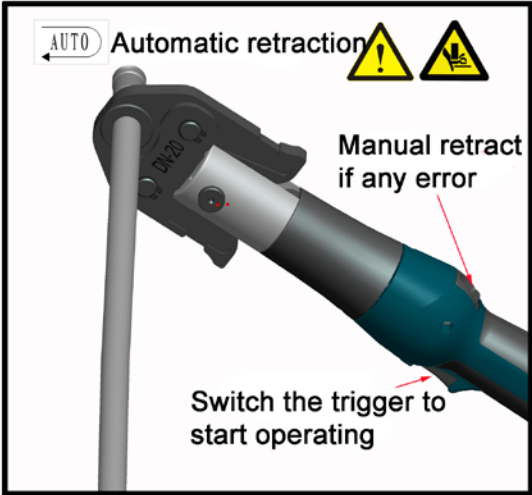
2.



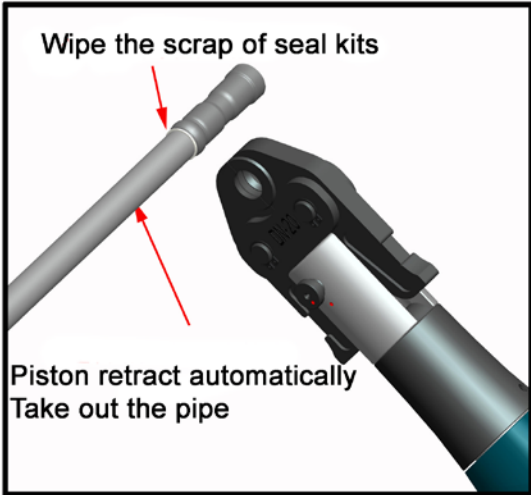
3.



4.



5.



6.

4. Service

Have your Battery Powered Pressing Tool serviced by a qualified service technician using only identical replacement parts. This will ensure that the safety of the Battery Powered Pressing Tool Kit is maintained.

SPECIFIC SAFETY RULES

1. Maintain labels and nameplates on the tool which carry important safety information. If unreadable or missing, contact the agent to replace.
2. This product is not a toy, keep it out of reach of children.
3. Do not put your fingers into the head of the tool during operating. Your fingers could be pinched very severely.
4. Make sure the head was locked firmly during operation.
5. Do not use the tool without jaws
6. Do not knock any parts of the tool, otherwise it will cause injury.
7. Do not operate at will, it will damage the MCU and electric system
8. The design of the limit screw on the head is for preventing the head from dropping or popping.
9. Make sure the head was locked firmly during operation.
10. Do not use this tool for continuous use. After 30 to 40 cycles, allow the tool to cool for 15 minutes.
11. Do not secure this tool in a vise. This tool is designed for hand-held operation.
12. The built-in safety valve goes through strict pressure test before marketing; please do not adjust the pressure by unprofessional person. If the pressure is not enough please return the tools back to the service center. The tool only can be reused after checking and testing by trained person.
13. The warnings, precautions, and instructions discussed in this instruction manual cannot cover all possible conditions and situations that may occur. It must be understood by the operator that common sense and caution are factors which cannot be built into this product, but must be supplied by the operator.

UNDERSTAND YOUR TOOL

EZ-1528 is a tool for connecting stainless steel pipe, XPAP, PEX pipe. It is powered by Li-ion, actuated by motor and controlled by MCU. With a high pressure hydraulic system, it is a perfect tool to be used in heating installations..

1. Specification

Max. crimping force:			24KN
Rated working pressure:			50MPa
Pressing range (Nominal Dia, mm)	For thin-wall stainless pipe and Copper pipe		DN 15、 18、 22、 28
			SU 13、 20、 25
	For XPAP Pipe	TH type	16、 20、 26、 32
		U type	16、 20、 25、 32
	For PEX Pipe		15(3/8”) 、 18(1/2”) 、 20(5/8”) 、 24(3/4”)、 30(1”)
Stroke:	35mm		
Oil Capacity:	35 ml		
Hydraulic oil:	Shell Tellus T 15#		
Ambient temperature	-10-40℃		
Battery:	DC 18V 3Ah, Li-Ion.		
Time/crimp:	3-8 s		
Charging voltage:	AC 100V～240V ; 50～60Hz		
Charging time:	Approx.2 hours		
Accessories:			
Battery:	2 pcs		
Charger:	1 pc		
Sealing ring of cylinder:	1 set		
Sealing ring of safety valve:	1 set		

STANDARD JAWS



The size was marked on the surface of the jaws. If ask for special size or special shape, please contact the distributor or manufacturer, they can custom made die according to detail requirements.

2. Usage of the tool

⚠CAUTION

- 1) First you have to check the LED indicator is light or not. If the indicator is light on for more than 5 seconds, it means no power of the battery and should change the full powered battery to settle on the tool.
- 2) Select the right jaw for the intended application,

⚠CAUTION Don’t operate the tool without jaws.

- 3) The crimping head has to be opened by turning the fixed pin anticlockwise and pull out the fixed pin, put the jaw into, push the fixed pin and turn clockwise 90⁰ to lock the jaw.

⚠DANGER Make sure that two red points in the same line to avoid the fixed pin rollout.

- 4) A pressing process is initiated by switching the trigger. It is defined by the closing motion of the jaws. The connection material is positioned in the stationary half of the jaw and the moving part is approaching the compression point.

⚠WARNING

The groove of the O-ring must be put in the groove of the jaws well, otherwise the O-ring will be damaged

- 5) A pressing cycle is terminated when the jaws contacted each other and when the maximum pressing force is reached. After the pressing cycle is completed the piston retracts automatically. Afterwards a new pressing cycle can be initiated or the pressing process can be terminated by opening the jaws and remove the pipe out of the ram.

⚠CAUTION

The pressing process can be interrupted at any moment by releasing the trigger.

⚠DANGER

Do not put your fingers into the head of the tool during operating. Your fingers could be pinched very severely.

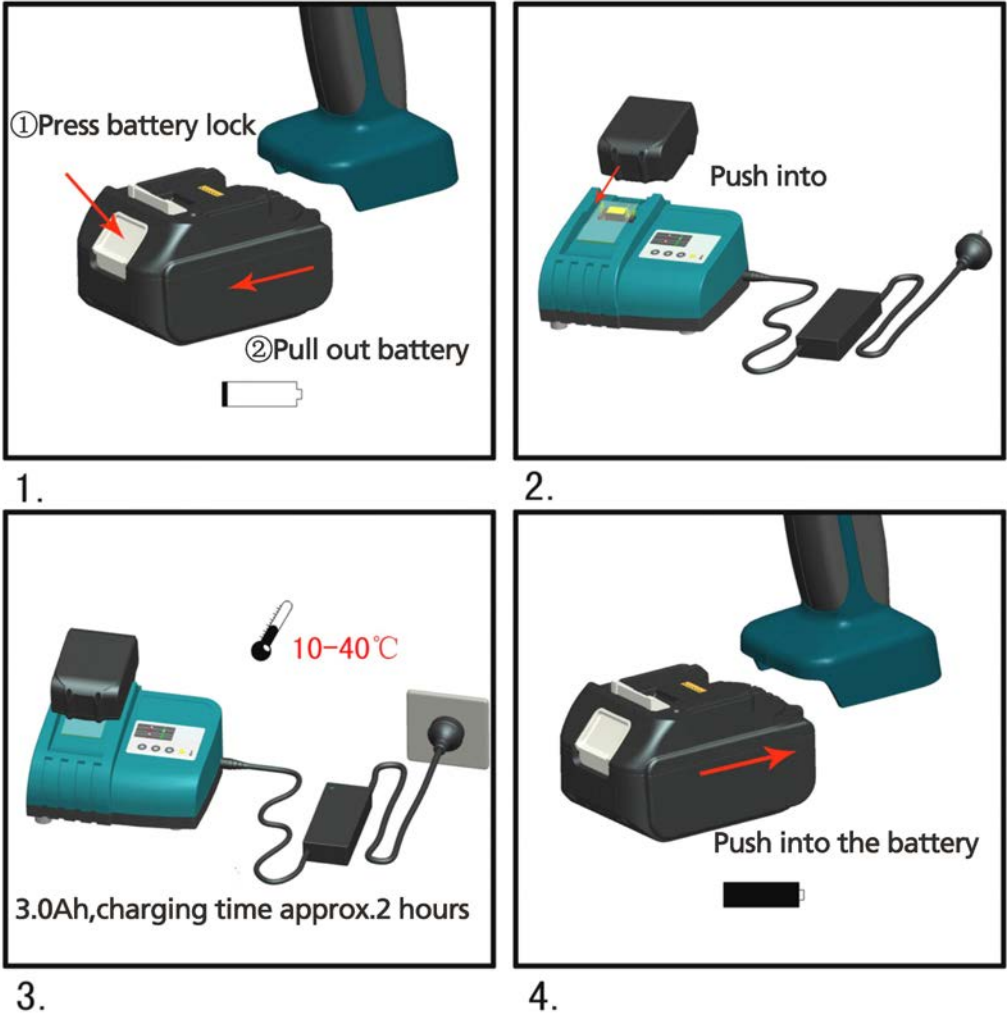
OPERATING INSTRUCTION

Read the entire SAFETY INFORMATION section at the beginning of this manual including all text under subheadings therein before using this product.

Use this tool for the manufacture's intended purpose only. Use other than that which is described in this manual can result injury or property damage.

1. Charging

Push battery into charger and connect the plug with the plug seat. Make sure the room temperature is between 10°C-40°C. The charging time is around 2 hours. Please see the illustration below.



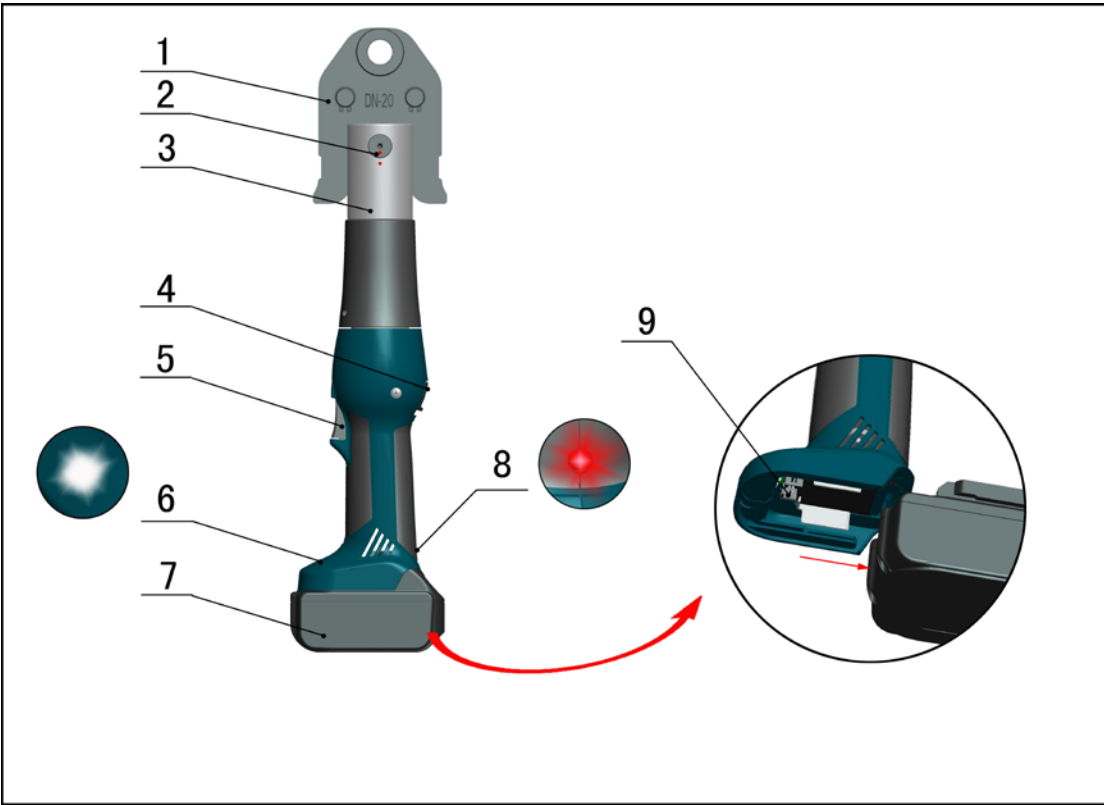
The detail of the charging information, please refer to the manual (MANUAL FOR CHARGER)

CAUTION

The battery can be used for hundreds of times, when the life span reduced obviously, change to a new battery please.

Please charging the battery in time to avoid it to be used up absolutely, otherwise it will become useless forever. If the battery not be used for a long time, it will discharge automatically. Make sure to take out the battery and charge it one time per/each quarter.

2. Description of components



Parts No.	Description	Function
1	Jaw	For pressing, interchangeable die
2	Pin	For fixing the jaws
3	Shoulder	For fixing the jaws
4	Release button	For manual retracting the piston in case of an incorrect operation.
5	Trigger	For starting operation
6	LED Lighting	For lighting in the dark place
7	Battery	Rechargeable battery for power transmit .Li-ion (18V) .
8	LED indicator	For indicating the operating condition and battery discharging situation.
9	USB Connector	For connecting with computer

3. Function description



MCU –automatically detect the pressure during operation and provide security protect, shut off the motor and reset automatically after operation.



Auto reset- Release the pressure automatically, retract the piston to the starting position when reached the max output.



Manual reset —Can retract the piston to the starting positioning in case of an incorrect operation.



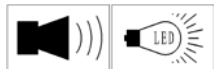
The head can be smoothly turned by 180°around the longitudinal axis in order to gain better access to tight corners and other difficult working areas.



Rapid stop working- The tool equip with brake, it can stop the pressure output quickly as soon as release the trigger.



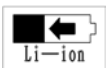
The whole tool is controlled by one trigger. This results in an easy handling and a better grip compared to a two button operation.



One significant sound will be heard and a red display flashes if any error occurs.



LED Light-the light will be lighting 20 sec every press.



Li-ion batteries do neither have a memory effect nor self discharge. Even after long periods of non operation the tool is always ready to operate. In addition we see a lower power weight ration with 50% more capacity and shorter charging cycles compare to NIMH batteries.



A temperature sensor makes the tool stop working automatically when the temperature over 60°C under long time working, the fault signal sounds, it means the tool can't continue work until the temperature reduce to the normal.



Micro-computer control system-with automatical pressure monitor and double safety protection, it will be released automatically and account the crimping time after crimping, the data will be got by connecting of computer.

Series No			Instruction	What it means
1			Self-checking	Self-checking to assure everything is ok
2	—5sec		Overload	Hydraulic system may damaged and need check immediately
3			Charging signal	Lacking power and need charging.
4	—5sec	—5sec	Power lacking warning	No power and need charging immediately
5			Temperature warning	Temperature too high and need to cool down.
6			No pressure	Motor working but without pressure
7	—20sec		lighting	the light will be lighting 20 sec every press